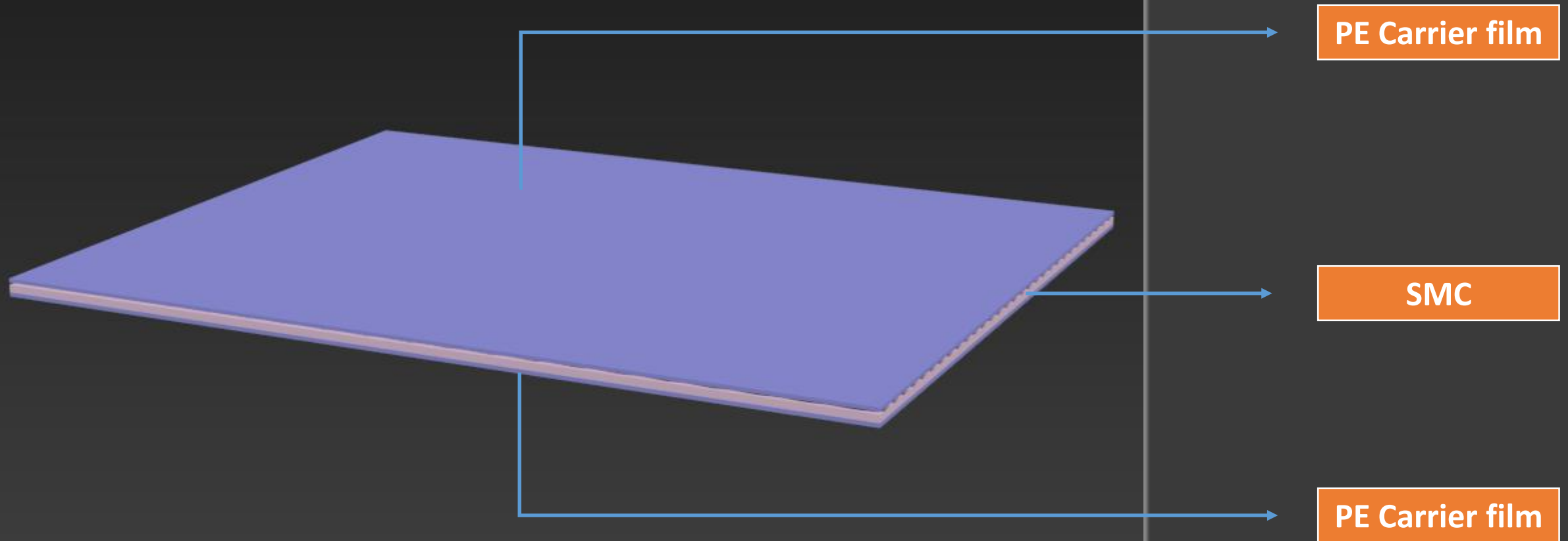


The most popular packaging solution for SMC/BMC

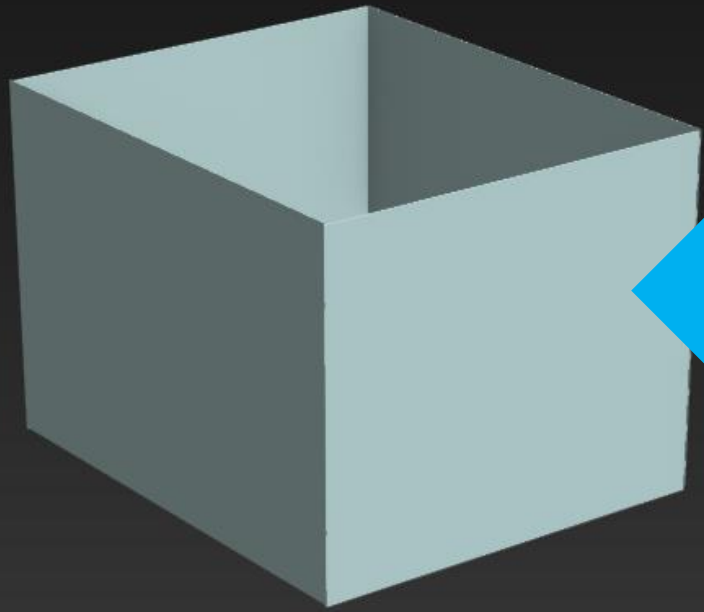


Why we suggest PE? Because PE costs much lower than PP or Multi-Layer PA films, and it's quite easy to **release!**

(In China, **60% customers choose PE**, **30% choose PP**, **10% choose PE/PA/PE**)

What is the disadvantage of PE film? PE is not so strong in isolating compared with Multi-Layer PA films, but....

Is there a solution? Yes, please check the second page.



②

This is a **reusable** plastic bag made of **PET/Aluminium/PE (100μ)**
Or **PE/PA/PE (60μ)**



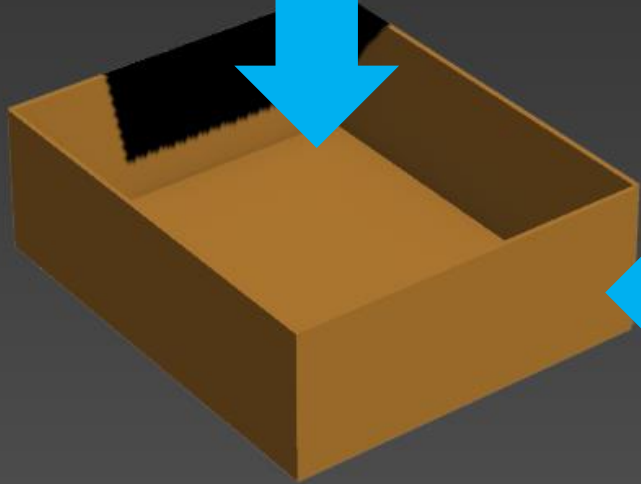
③

Put this bag into the paper box



①

This is a paper box usually used to store SMC materials



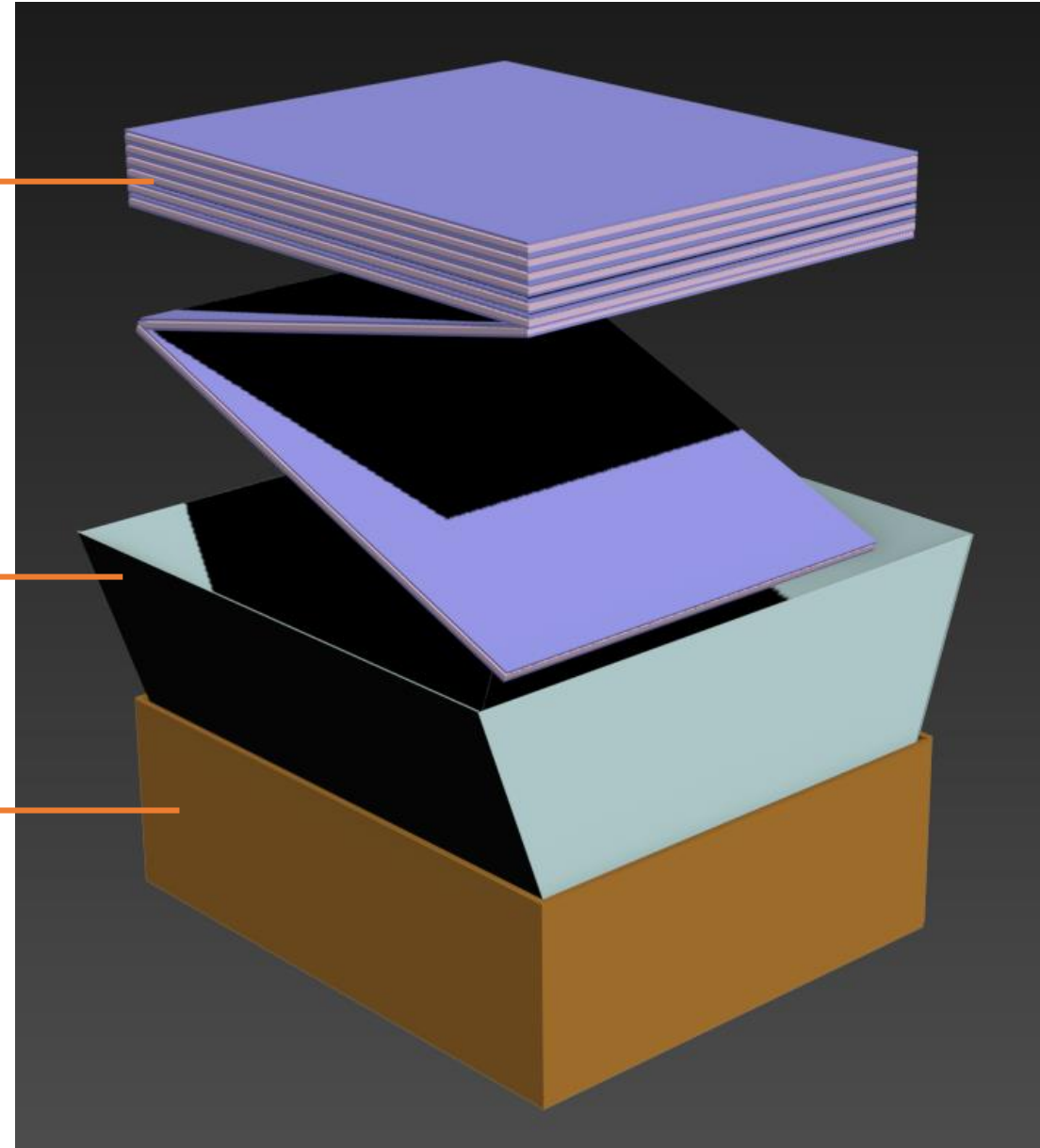
Reusable SMC Exterior Packaging Bag

SMC Packaged by PE film

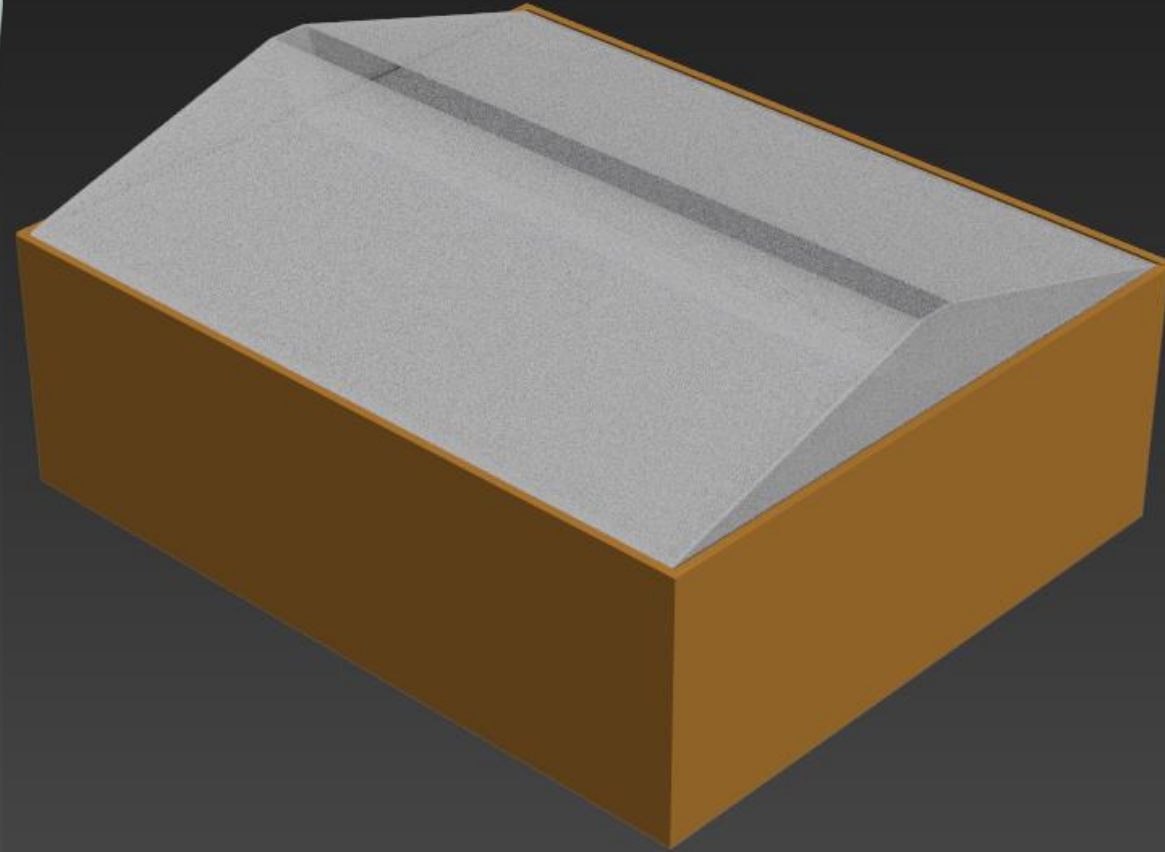
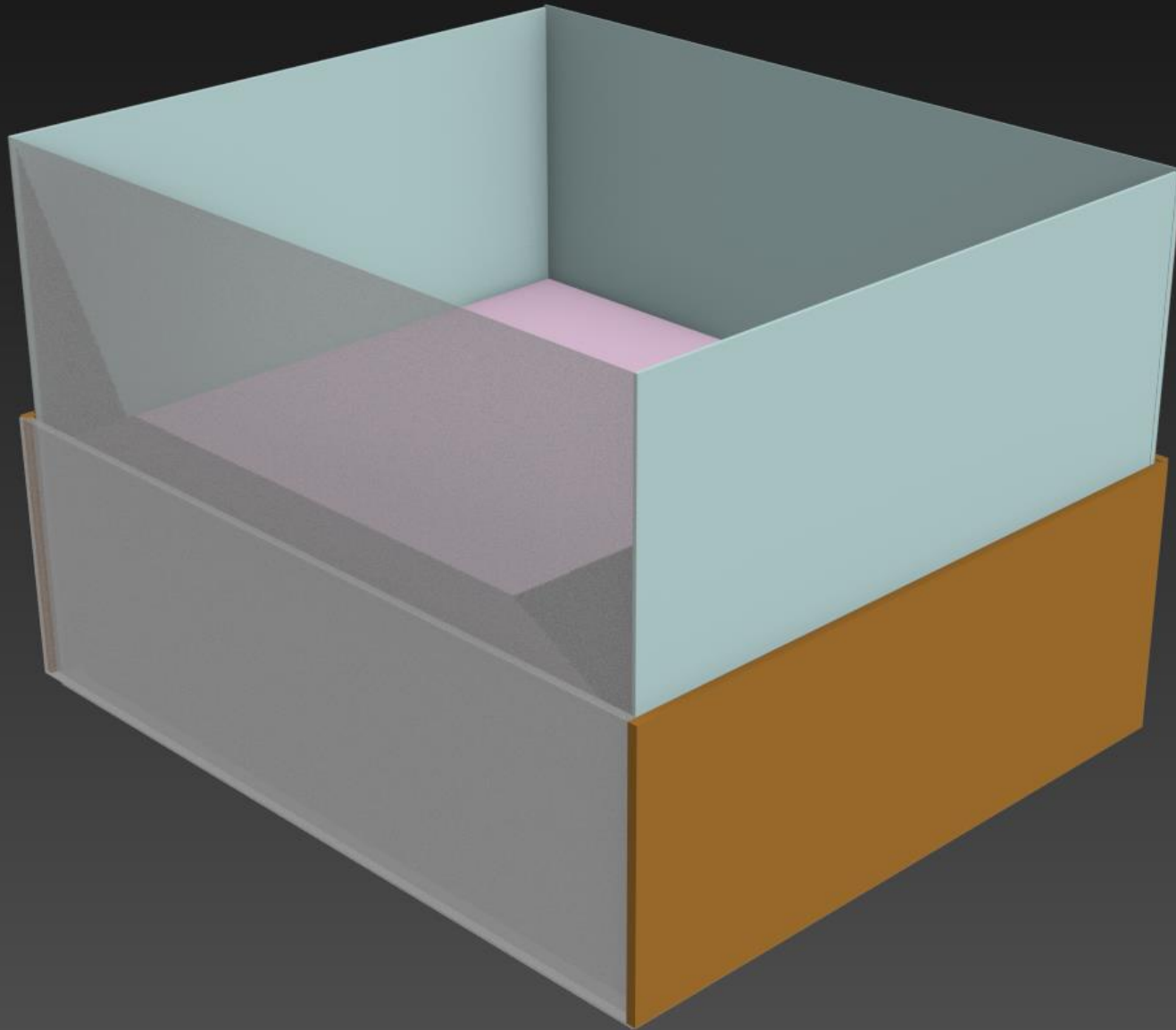
PET/Aluminium/PE (100 μ)
PE/PA/PE (60 μ)
Exterior Packaging Bag

Paper Box for Storage

PET/Aluminium/PE (100 μ)
PE/PA/PE (60 μ)



Reusable SMC Exterior Packaging Bag



You can use tapes or ropes to seal the bags



How to calculate the size of the bags :

Width: Paper box width + 0.1m

Length: Paper box length + 0.1m

Height: Paper box height + Paper box $\frac{1}{2}$ length

TOTAL: $W*L+W*H*2+L*H*2$

BMC Packaging Bag

